

IF YOU DO NOT MEASURE IT, YOU CANNOT IMPROVE IT

FUEL MASS FLOW METERS

In case of high volume flows (bunker meters) or applications where positive displacement meters with moving parts are undesirable (for example "difficult" fuels such as fat & acid fuels) we recommend our mass flow meters. The measuring principle is based on the Coriolis measurement and the meters have no moving parts. Our mass flow meters come in a wide range of capacities from 1-3000 tons per hour.

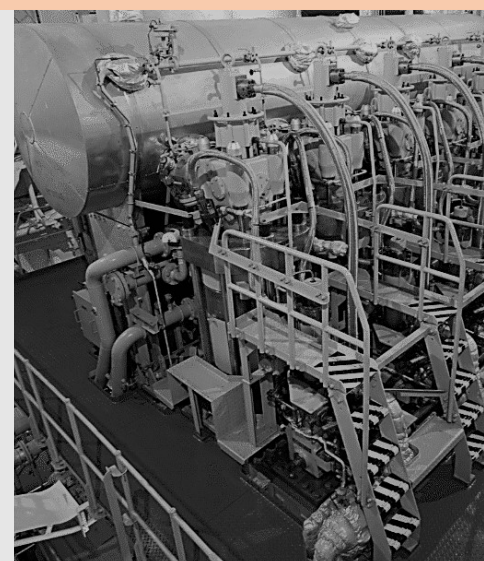
The electronic head can be delivered as a remote option. Standard the system is delivered with a pulse output and 4-20mA(HART) output. Other communication options can be delivered at request.

Possible data outputs;

- Mass flow
- Volume flow
- Temperature
- Specific Gravity
- Resettable counter
- Total counter volume flow
- Total counter mass flow

Other features;

- High accuracy (0,1%)
- Type approval of all major classification societies

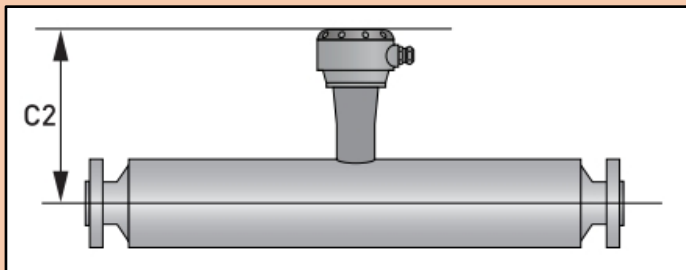


IF YOU DO NOT MEASURE IT, YOU CANNOT IMPROVE IT

FUEL MASS FLOW METERS

TYPE	S15	S25	S40	S50	S100	S150	S250	S400
DN15	X							
DN25	X	X						
DN40	X	X	X					
DN50		X	X	X				
DN80			X	X				
DN100				X	X			
DN150					X	X		
DN200						X		
DN250							X	
DN300							X	X
DN350								X
DN400								X
Max cap m ³ /hr								
MGO/MDO	5	15	80	150	400	900	2300	4500
HFO	2	10	40	80	200	500	1200	2200
sizes in mm								
A	105	115	170	220	220	325	410	510
B (max)	515	550	740	900	1290	1600	2000	2300
C1	245	250	275	300	320	369	410	465
C2	235	240	265	290	310	359	400	455
Weight in kg	12	15	25	50	90	220	450	950

With remote electronic head



electronic head directly mounted

