

IF YOU DO NOT MEASURE IT, YOU CANNOT IMPROVE IT

## FUEL MASS FLOW METERS

In case of high volume flows (bunker meters) or applications where positive displacement meters with moving parts are undesirable (for example "difficult" fuels such as fat & acid fuels) we recommend our mass flow meters. The measuring principle is based on the Coriolis measurement and the meters have no moving parts. Our mass flow meters come in a wide range of capacities from 1-3000 tons per hour.

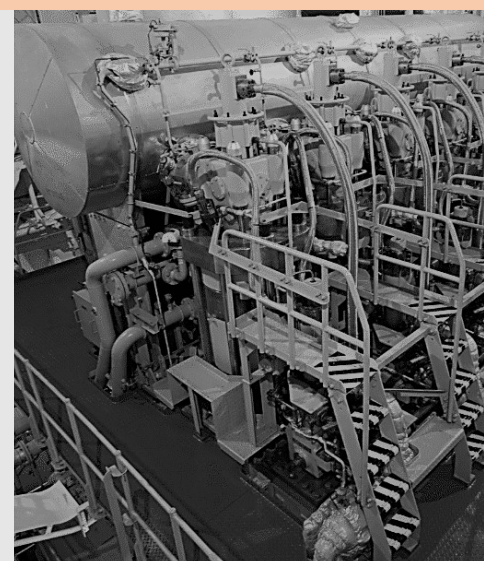
The electronic head can be delivered as a remote option. Standard the system is delivered with a pulse output and 4-20mA(HART) output. Other communication options can be delivered at request.

Possible data outputs;

- Mass flow
- Volume flow
- Temperature
- Specific Gravity
- Resettable counter
- Total counter volume flow
- Total counter mass flow

Other features;

- High accuracy (0,1%)
- Type approval of all mayor classification societies

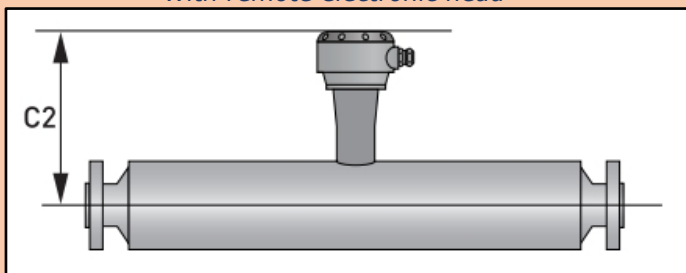


IF YOU DO NOT MEASURE IT, YOU CANNOT IMPROVE IT

## FUEL MASS FLOW METERS

TYPE	ES15	ES25	ES40	ES50	ES100	ES150	ES250	ES400
DN15	X							
DN25	X	X						
DN40		X	X					
DN50		X	X	X				
DN80			X	X				
DN100				X	X			
DN150					X	X		
DN200						X		
DN250							X	
DN300							X	X
DN350								X
DN400								X
L (max) in mm	515	550	740	900	1290	1600	2000	2300
Max capacities	ton/hr							
MGO/MDO	5	15	80	150	500	1250	3500	5000
HFO	2	10	40	80	300	800	2200	3000

*With remote electronic head*



*electronic head directly mounted*

